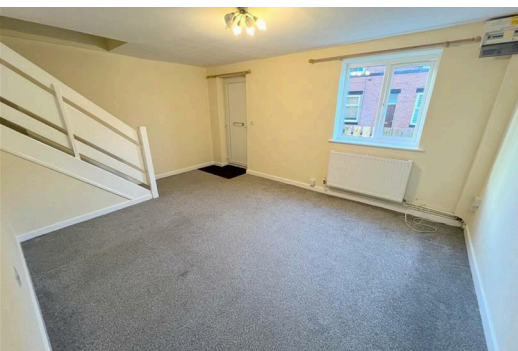




**7A Joseph Street, Manchester  
M26 1JX**

**£825 PCM**

Hyde Estates are pleased to present this two bedroomed terrace house to let in Radcliffe. Conveniently situated just off Stand Lane, just a short walk from Radcliffe Town Centre, Asda and the Metrolink. Well presented throughout. Offered unfurnished and available now.



### Accommodation

The property comprises, carpeted living room, fitted kitchen with some integral appliances and storage cupboard, two bedrooms and a three piece bathroom suite with tiled splash backs. The property benefits from gas central heating, double glazed windows together with a communal courtyard.

### Room Measurements

- Living room: 16`5" x 12`
- Kitchen: 13`4" x 10`4"
- Bedroom 1: 11`9" x 9`3"
- Bedroom 2: 12`6" x 6`9"
- Bathroom: 9`6" x 6`3"

### Gardens

Communal gardens.

### Additional information

Benefits uPVC double glazed windows and gas central heating.

### Council Tax

Bury Council, Band A.

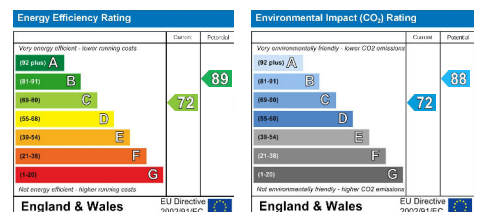
### Viewings

To be arranged via Hyde Estate & Letting Agents 0161 773 4583.

### Disclaimer

The information and images provided in this property advertisement are intended for guidance purposes only. While we make every effort to ensure the accuracy of the details, we strongly recommend that interested parties view the property in person to confirm the property's condition and suitability for their specific requirements.

The photographs used in this advertisement may have been digitally enhanced and may not accurately represent the current condition of the property. Any measurements or distances provided are approximate and should not be relied upon for any purpose. Furthermore, the description and details provided are based on the landlord's understanding and may be subject to change without notice. Prospective tenants are advised to verify any specific details that are important to them before entering into any agreement. We do not accept any liability for any loss or damage, whether direct or indirect, arising from reliance upon the information provided in this advertisement. We strongly advise all parties to seek professional advice and conduct their own due diligence before making any decisions or commitments related to this property. By viewing this advertisement, you agree to the above disclaimer and acknowledge that any reliance on the information provided is at your own risk. Please note that this disclaimer is subject to change and may be updated without prior notice.



1 St. Margarets Road, Prestwich, Manchester, M25 2QB