



Hyde Estate & Letting Agents

**5-7 Bolton Road (whole ground floor), Bolton
BL4 8DB**

£1,450 Per Calendar Month

Hyde Estates present this ground floor double fronted retail unit in Kearsley. Situated on an established parade of shops fronting Bolton Road (A653), a high traffic location with excellent visibility from the main road. The unit measures approx 1317 SQ FT (122.35 SQ M).



Hyde Estates present this double fronted ground floor retail unit in Kearsley. Situated on an established parade of shops fronting Bolton Road (A653), a high traffic location with excellent visibility from the main road. The unit measures approx 1317 SQ FT (122.35 SQ M). The retail area features plastered walls with suspended ceilings and inset lighting. There's a separate office together with a kitchen, WC, and shower room. To the rear is a large storage/ workshop with double doors to the rear, ideal for loading. Also features electric roller shutters fitted to the front elevation. The unit would suit a variety of uses that may require a showroom, office and storage.

Location

Situated on an established parade of shops at the junction of Bolton Road (A653), Long Causeway (A5082) and Higher Market Street (A6053). Just a short drive to the A666 and M61 motorway junction 3.

Accommodation

Ground floor approx 1317 SQ FT (122.35 SQ M)

Terms of lease

By negotiation

VAT

We understand the property is not liable for VAT.

Usage

Retail and financial

EPC - C

Business rates

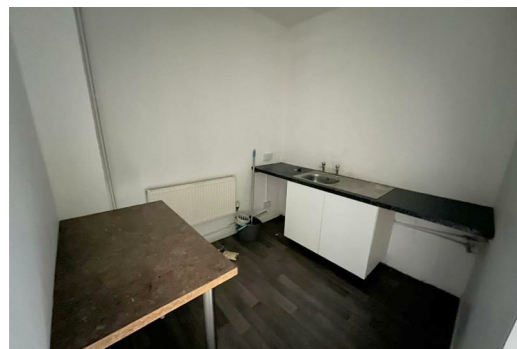
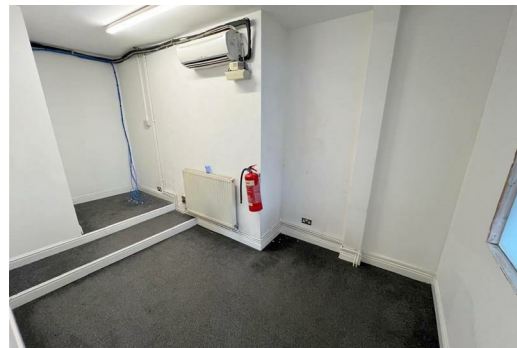
The property is described as "shop and premises" for further information please contact Bolton Council Business Rates Department on 01204 333333.

Legal costs

Each party to bear their own legal costs.

Viewings

Please contact Hyde Estate & Letting Agents 0161-773 4583



Energy Efficiency Rating		Environmental Impact (CO ₂) Rating	
Current	Potential	Current	Potential
England & Wales EU Directive 2002/91/EC		England & Wales EU Directive 2002/91/EC	

1 St. Margarets Road, Prestwich, Manchester, M25 2QB