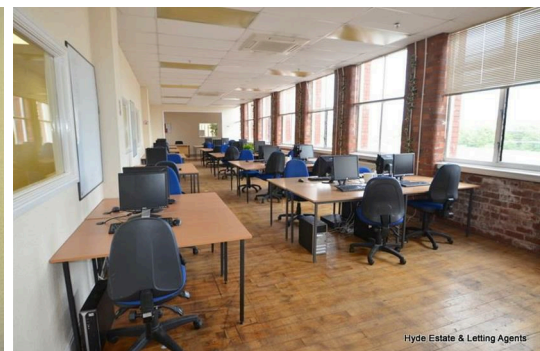




**Arrow Mill Arrow Mill, Rochdale  
OL11 2YW  
£251 PCM**

Serviced office suites available with flexible terms, suitable for a range of business uses, ranging from 100 sq ft - 10,000 sq ft. Benefits include; rates and utilities, high speed internet, canteen facilities, served by lift together with parking. Located in a highly prominent position just 5 minutes to junction 20 off the M62 motorway.



Serviced office suites available with flexible terms, suitable for a range of business uses, ranging from 100 sq ft - 10,000 sq ft. Benefits include; rates and utilities, high speed internet, canteen facilities, served by lift together with parking. Located in a highly prominent position just 5 minutes to junction 20 off the M62 motorway.

**Location**

Arrow Mill is located in a highly prominent position on Queensway (A664), Arrow Mill is visible from the M60 Motorway junction 20. Closely situated to Rochdale town centre and benefits easy access to the M62 motorway.

**Accommodation**

Ranging from 100 sq ft - 10,000 sq ft

**Terms**

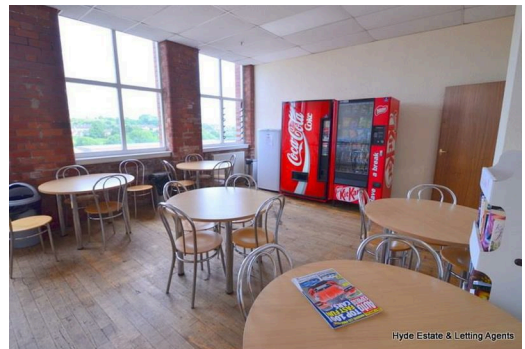
The terms of the lease are negotiable with flexible terms.

**Rent**

Offices available from £58 per week to include rates and utilities.

**Viewings**

Please contact Hyde Estate & Letting Agents 0161 - 773 4583



Energy Efficiency Rating	Class	Potential	Environmental Impact (CO <sub>2</sub> ) Rating	Class	Potential
Very energy efficient - lower running costs			Very environmentally friendly - lower CO <sub>2</sub> emissions		
(92-101) <b>A</b>			(92-101) <b>A</b>		
(81-91) <b>B</b>			(81-91) <b>B</b>		
(69-80) <b>C</b>			(69-80) <b>C</b>		
(55-68) <b>D</b>			(55-68) <b>D</b>		
(39-54) <b>E</b>			(39-54) <b>E</b>		
(21-38) <b>F</b>			(21-38) <b>F</b>		
(1-20) <b>G</b>			(1-20) <b>G</b>		
Not energy efficient - higher running costs			Not environmentally friendly - higher CO <sub>2</sub> emissions		
<b>England &amp; Wales</b>	EU Directive 2002/91/EC		<b>England &amp; Wales</b>	EU Directive 2002/91/EC	

1 St. Margarets Road, Prestwich, Manchester, M25 2QB